



## North Central Educational Service District announces regional Teacher of the Year

The North Central Educational Service District has selected Malia Renner-Singer as the 2020 regional Teacher of the Year. Renner-Singer is a Social Studies and AVID teacher at Cascade High School in Leavenworth. She has been in education for 18 years and holds a Master's Degree in Curriculum and Instruction from Eastern Washington University and a Bachelor's Degree from Whitman College and was selected by a committee from a pool of nominees submitted from throughout the four-county NCESD service district.

In addition to teaching duties, Renner-Singer implemented the AVID (Advancement Via Individual Determination) program at Cascade High School. A national program offered at more than 6,000 schools, AVID supports students in their college dreams and targets students who may be first-generation college attendees, face financial need, or may be traditionally underrepresented at the college. The program at Cascade High School is now in its fourth year and over 80 students currently participate.



"It is a great honor and privilege to be named NCESD Teacher of the Year. As a Civics teacher, I am always looking for ways to connect my students, their families and cultures to the governing process. I am grateful because I know what my purpose is- to have a direct, positive impact on the lives of my students and their families. In turn, this means a direct positive impact on my community," she explained.

### NCESD on Social Media



[facebook.com/ncesd171](https://facebook.com/ncesd171)



[twitter.com/NCESD](https://twitter.com/NCESD)



[instagram.com/northcentralesd](https://instagram.com/northcentralesd)



[pinterest.com/ncesd](https://pinterest.com/ncesd)



[youtube.com/channel/  
UCnUucNEpdn32cCLLNwG63\\_w](https://youtube.com/channel/UCnUucNEpdn32cCLLNwG63_w)

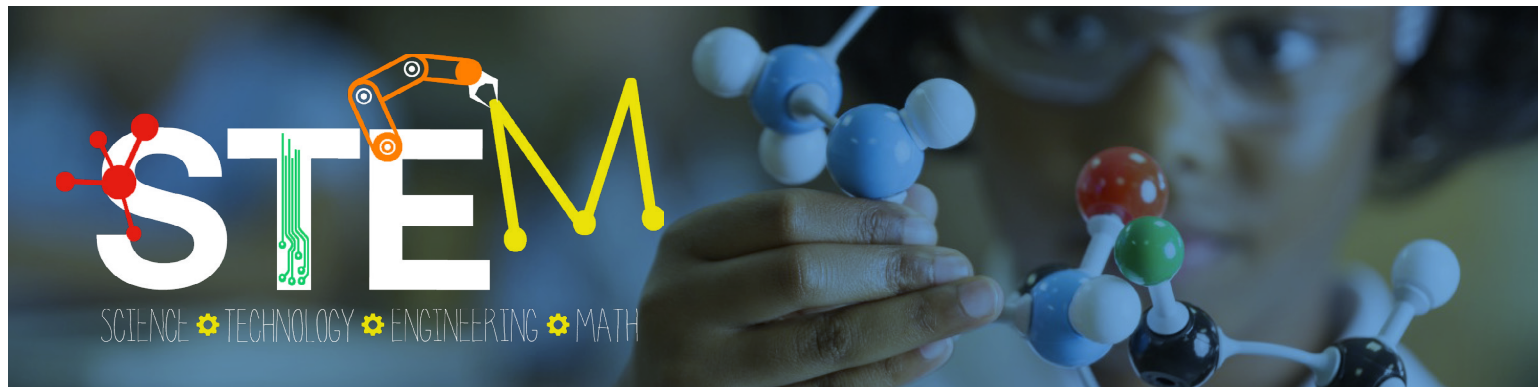


509.665.2610  
[info@ncesd.org](mailto:info@ncesd.org)

430 Olds Station Road  
Wenatchee, WA 98801

[ncesd.org](https://ncesd.org)





## Register now for the 3rd-Annual STEM Summit!

The 3rd-Annual STEM Summit will be held on August 13-15 at the Wenatchee Convention Center.

This event will highlight multiple professional learning opportunities for teachers and educational staff members in the areas of science, technology, engineering and mathematics taught by experts and specialists in their fields.

The NCESD is currently accepting Presenter Applications. Click [here](#) for more information.

Each day will begin with a keynote speaker and offer over 50 breakout sessions over the course of 3 days. Eighteen STEM Clock Hours will be offered for purchase and lunch will be provided each day.

**Registration is limited, so don't delay!**

Additional information and registration details can be found at [here](#).

*"So many good ideas! Thank you for the time to start my planning. This was exactly what I needed!"*

*"A wealth of information and resources for elevating our students' learning experience."*

*"Great ideas that I can use in my classroom!"*

## NCW Schools Recognized for Achievement

Congratulations to the following schools for being recognized by the Washington State Board of Education. Each of these schools have been recognized for making gains in targeted areas and are on a path toward overall improvements in achievement and growth.

**Growth in the WSIF metrics while narrowing the gap between the highest and lowest performing student groups.**

- Vale Elementary School
- Cashmere School District

**High achievement in ELA, Grad Rate, and SQSS measures.**

- Almira Coulee Hartline High School
- Coulee-Hartline School District

**High achievement in ELA, Grad Rate, and SQSS measures.**

- Liberty Bell Jr Sr High
- Methow Valley School District

**Closing gaps and demonstrating improvement among student groups identified for support.**

- Soap Lake Elementary
- Soap Lake School District

**Closing gaps and demonstrating improvement among student groups identified for support.**

- Washington Elementary School
- Wenatchee School District

